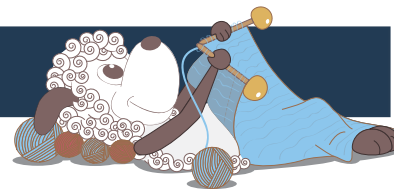


Karla - a gorgeous and interesting Fairisle sweater



Design: Ditte Lerche

Ditte Lerche has created a series of designs inspired by classic vintage knitwear, but designed in a very contemporary style. Karla is a gorgeous multi-coloured Fairisle design worked in an very interesting mix of yarns and colours.

3rd English edition - November 2019 © Filcolana A/S
English translation: Signe Strømgaard

Materials

Colour A: 200 (200) 200 g Arwetta Classic by Filcolana in colour 102 (Black)
Colour B: 25 (25) 25 g Tilia by Filcolana in colour 255 (Limelight)
Colour C: 50 (50) 100 g Arwetta Classic by Filcolana in colour 138 (Geranium Red)
Colour D: 25 (25) 25 g Tilia by Filcolana in colour 335 (Peach Blossom)
Colour E: 50 (50) 50 g Arwetta Classic by Filcolana in colour 100 (Snow White)
Colour F: 25 (25) 25 g Tilia by Filcolana in colour 337 (Bright Cobalt)
Colour G: 50 (50) 100 g Arwetta Classic by Filcolana in colour 136 (Mustard)
Colour H: 50 (50) 50 g Arwetta Classic by Filcolana in colour 197 (Aqua)

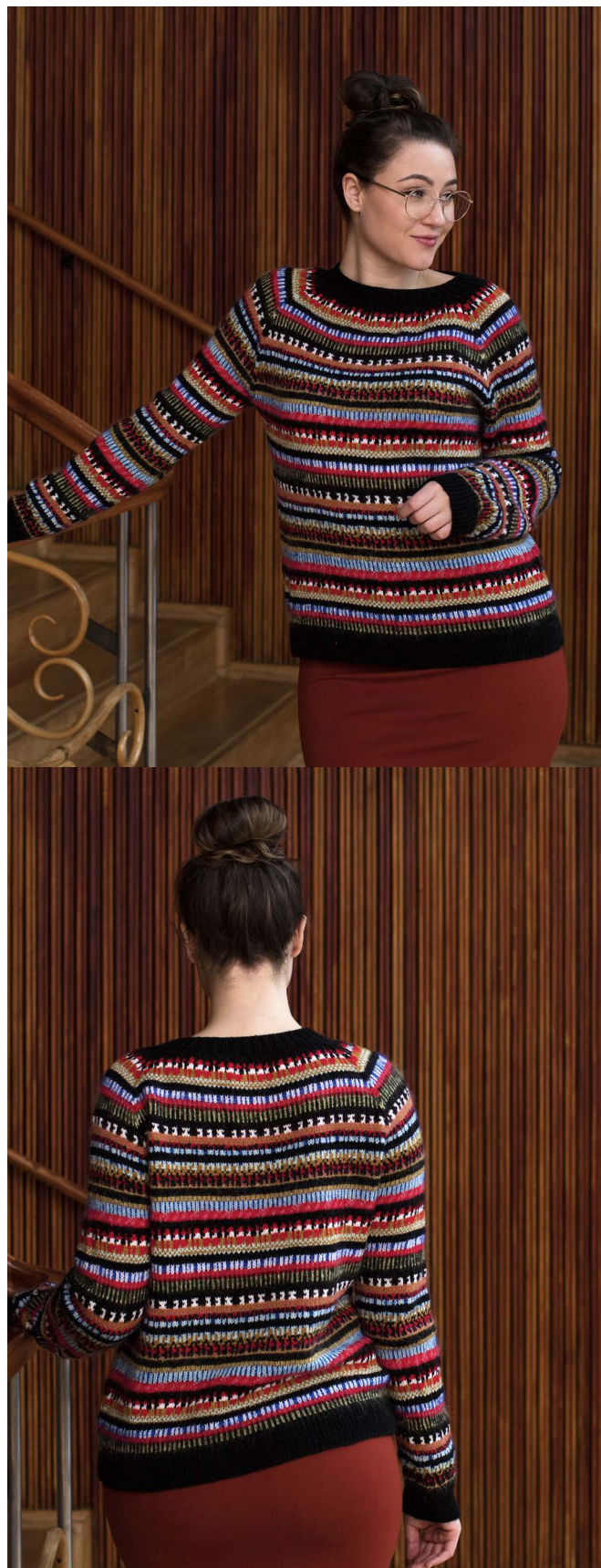
3 mm and 3,5 mm circular needle, 60 and 80 cm
Stitch markers

Sizes

S (M) L

Measurements

Body, chest: ca. 80-90 (90-100) 100-110 cm
Sweater, chest: 98 (107) 116 cm



Sleeve length: 44 (45) 45 cm

Total length: 59 (61) 62 cm

Gauge

Approx. 30 sts and 30 rows in pattern on a 3,5 mm needle = 10 x 10 cm.

Take care to measure gauge on a part of the pattern that is worked in a combination of mohair and wool.

Directions for knitting

The sweater is worked from the bottom up. First the body is worked in the round to the armholes, then the sleeves are worked in the same way. Then body and sleeves are joined for the yoke, which is worked in the round with classic raglan decreases. Finally a rib neck edge is worked.

Body

Cast on 294 (322) 350 sts on a 3 mm circular needle with colour A. Join in the round and place a marker for the beginning of the round. Work 5 (7) 8 cm of k1, p1 ribbing.

Change to a 3,5 mm circular needle and work the charted pattern.

Work a total of 91 round have been worked in pattern (see notations on the chart). The work now measures approx. 35 (37) 38 cm.

Bind off for the armholes on the next round: Bind off 3 sts, work 141 (155) 169 sts in pattern, bind off 6 sts, work 141 (155) 169 sts in pattern, bind off 3 sts. Left the sts rest on the needle, while the sleeves are worked.

Sleeves

Cast on 70 (74) 78 sts on a 3 mm circular needle and colour A. Join in the round and place a marker for the beginning of the round. Work 5 (6) 6 cm of k1, p1 rib. Change to a 3,5 mm circular needle and knit 1 round, while increasing 10 sts evenly across the round. There are now 80 (84) 88 sts on the needle.

Work in pattern on the sleeve as follows: Repeat all the sts of the chart a total of 5 (6) 6 times, then work the first 10 (0) 4 sts once more.

Continue in pattern as established while at the same time working an increase round every 8th (9th) 9th round a total of 13 times.

Increase round: K1 in pattern, M1, work in pattern to the last stitch, M1, k1 in pattern.

New sts are worked in pattern. There are now 106 (110) 114 sts on the needle.

Work straight in pattern until a total of 117 rounds in the charted pattern have been worked and the sleeve measures approx. 44 (45) 45 cm. End on the same row of the pattern as on the body.

Next round: Bind off 3 sts, work in pattern to the last 3 sts, bind off 3 sts (a total of 6 sts have been bound off). There are now 100 (104) 108 sts on the needle.

Move the sts to a stitch holder and work a second sleeve the same way as the first.

Yoke

Join the sleeves to the body on a 3,5 mm circular needle over where sts were bound off for the armholes. There are a total of 482 (518) 554 sts on the needle. Place a marker each of the 4 places where body and sleeves meet. Begin the round at the marker between the back and the left sleeve.

Work in the round in pattern while working raglan decreases at the same time.

Decrease round: *K2tog tbl, work to 2 sts before marker, k2tog*, repeat from * to * to end of round. Work a decrease round every round.

Work a total of 65 rounds in pattern.

Change to a 3 mm circular needle and work 1 round in pattern (remembering to work raglan decreases). There are now 218 (264) 290 sts left on the needle. Now continue in colour A only as follows:

Round 1: Knit 2 (4) 0, *knit 4 (3) 3, k2tog *, repeat from * to * to end of round. 182 (212) 232 sts on the needle.

Round 2: Knit to end of round.

Round 3: K2, *knit 7 (3) 3 sts, k2tog *, repeat from * to * to end of round. 164 (170) 186 sts on the



needle.

Round 4 and 5: Knit to end of round.

Round 6: Knit 0 (2) 2 sts, *k2tog, p2tog *, repeat from * to * to end of round. 82 (86) 94 sts on the needle.

Work rib with 2 strand of colour A. work 2,5 cm of k1, p1 ribbing. Bind off loosely in rib.

Finishing

Sew the hole under each sleeve. Weave in the ends.

Chart

